

Helpfor Excel to LearnDash

PremiumVersion (Platinum)

Version 4(New)

Highlights of this new version ?

In version 4 ,

if you keep the Quiz Name same , all questions having same quiz name will be imported under THAT Quiz name only. Please see this video for version 4

<https://www.youtube.com/watch?v=uqlgMtleBQI>

In Version 3.6 , you can

1. More than one quiz from a single sheet. So , if geography has 10 and Science has 10 , you can import both quizzes together with 10 and 10 questions.
2. Till now , for single and multiple answers, there were two templates. Now you can import both types of quizzes from same excel template. So , you can create even mixed type of quizzes from excel spreadsheet
3. You can give custom marks to questions in Single Answer types, Multi answer type, Cloze Answer types and free answer type . If left blank , default score/mark is set at 1
4. Previously questions above 199 characters were not being imported. But now , the question of much bigger size can be imported. You *must write a small title to identify within quiz .*
5. *You can import Youtubevideo . Just paste URL of youtube*

How to Install

1. Unzip the Folder **LearnDash-platinum-Ver-4.ZIP**
2. You will get following –
 - a. Plugin**exceltolearndash36.zip**
 - b. Excel Template files
 - c. A folder for Template Help files.
3. Install the **exceltolearndash-V-4.zip** **without** unzipping by logging to your WP-Admin

How to Create Quiz on Excel

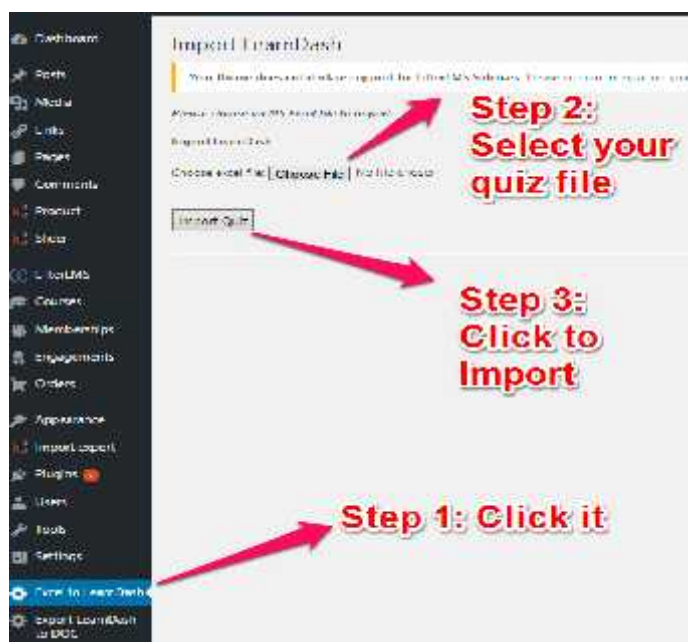
1. Use the templates given for creating types of quizzes you want.
 - a. Single and Multiple answer template.
 - b. Sort answer type
 - c. Cloze answer type
 - d. Matrix answer type
 - e. Assessment type
 - f. Free answer type
2. Please note that in some wordpress webhosts , newer form of excel 2010 in **XLSX format does not run.....**you will see that import halts some time.....in that case just try to save excel file in 97-2003 version by going to FILE==> SAVE As=> select 97-2003 version

This will produce xls version.

3. **Do not add or delete to modify any column.**
4. Most important in this version is that if you leave TITLE column blank , that question will not be imported.

How to Import After Plugin Install

Please see the image below:



How to import Math Type Questions

Use following HTMLCODES

(use these to import types of text described below)

- 1) Bold: `abc` NOTE: replace abc with the needed text
- 2) Italic : `<i>abc</i>` NOTE: replace abc with the needed text
- 3) Underline : `<u>abc</u>` NOTE: replace abc with the needed text
- 4) Superscript : `abc^{def}` NOTE: "def" is the superscript
- 5) Subscript : `abc₁₂₃` NOTE: "123" is the subscript
- 6) Strike : `black with red strikethrough` NOTE: replace the text "black with red strikethrough"
- 7) Squareroot: `∛ X +1` NOTE: replace the text "X + 1"
- 8) Cuberoot: `∛ X +1` NOTE: replace the text "X + 1"
- 9) Division sign : `432#247;123` NOTE: replace the text "432 and 123" with required number
- 10) Color Code : `abc` NOTE: replace "red" to any required color and the text "abc"

Special Note on Multiple Answer

In case of multiple answer type questions, you need to follow following rules

1. Select Multiple as answer type
2. Multiple answers are written with help of FOUR PIPES (Lines)

(i) Say , out of five options , A and C are correct answers, so you will have to write

A I C I I

(ii) If answer B and D are correct, you need to write I B I I D I

(iii) If answer B, C & E are correct , write I B I C I I E

(iv) If all answers are correct , write A I B I C I D I E

Special Note on Image & Video Import

In templates you will find column dedicated to images . These column will also let you import YouTube video.

In both cases, images or YouTube , you need to put full URL of video.

Where to get Support ?

There is 3 months free support with the plugin. Contact <https://support.zoho.com/portal/wppluginsforyou/home>

or

<http://wppluginsforyou.com/contact-us/>

Any update will also be given free of cost within three months.